

# Testimonials

**Ms. S. Raaghavi**, Batch 2017-21  
Associate Analyst, ZIFOR&D Solutions



It was indeed a great experience for me to study at KPRIET. Our department offered tremendous support and motivation in all my deeds. Our College offered us hands on training and prepared us to meet the industry. Along with my potential, the guidance from our faculties was very essential for me to stand in this position today. Our infrastructure gives positive vibrations that nurtures our learning. Securing a place in the corporate is not easy these days, but with the institute's training, they made it as a cake walk.

**Mr. Sunil U**,  
Service Operations Manager - ISC at Philips,  
Indian Institute of Management, Bengaluru



As an industry expert in designing and approving the curriculum for Biomedical Engineering, I find that all necessary basics are delivered in the course, the institution shows great involvement in upgrading the course content and makes all efforts to improve the students to be industry ready with expert guest lectures, internships and training programs, their placement records are very much impressive"

## Centres of Excellence



## Top Recruiters



Placement 2022

26 Nos  
₹ 4+ LPA

14 Nos  
₹ 5+ LPA

02 Nos  
₹ 10 LPA

Highest Salary  
₹ 10 LPA

Average Salary  
₹ 4.5 LPA

# BME

# BIOMEDICAL ENGINEERING



Counselling Code  
**2764**

## Facilities @ KPRIET



## KPR IAS Academy

Institute for  
UPSC Exams

2017 **06** Successful Candidates

2018 **09** Successful Candidates

2019 **24** Successful Candidates

2020 **12** Successful Candidates

kpriasacademy.in



**KPR Institute of Engineering and Technology**

Learn Beyond

(Autonomous, NAAC "A")

## THE KPR GROUP



kpriet.ac.in [f](#) [i](#) [t](#) [g](#) /KPRIETonline

For Admissions and Enquiries | 0422 2635600, +91 75488 88444/555 | admission@kpriet.ac.in  
Avinashi Road, Arasur, Coimbatore, Tamil Nadu - 641 407

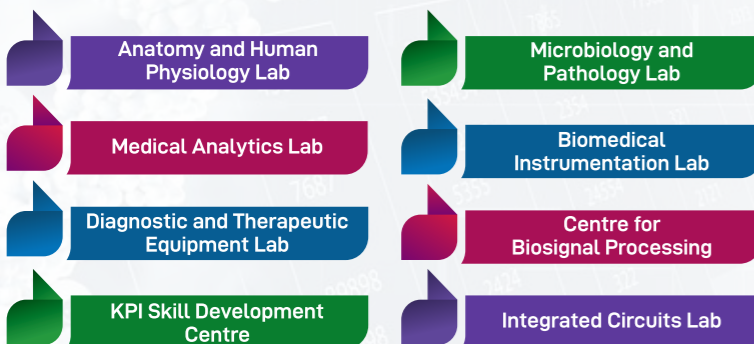
## About Department

- Biomedical engineering is a prospering career field as health and technology are coming together to revolutionize the field of medicine.
- Established UG Biomedical Engineering in the year 2017
- Application of engineering principles and design concepts to medicine and biology for healthcare purposes
- Scope of a biomedical engineer is the manufacture, service, design and maintenance of the medical equipment in industries and hospitals

## Why BME @ KPRIET?

- Faculty team with technical exposure and expertise in Biomedical Engineering.
- Centre of Excellence in Biosignal processing
- Hospital supported skill development centre powered by KPI Skill centre, Calicut
- Centre for research activities in BME
- Special laboratories with modern softwares
- Industry ready curriculum and medical projects based learning
- Collaborations with multispeciality hospitals and medical industries
- Building Entrepreneurs through Innovation and Startups

## Special Laboratories / Centres



## Professional Bodies



## Research and Development

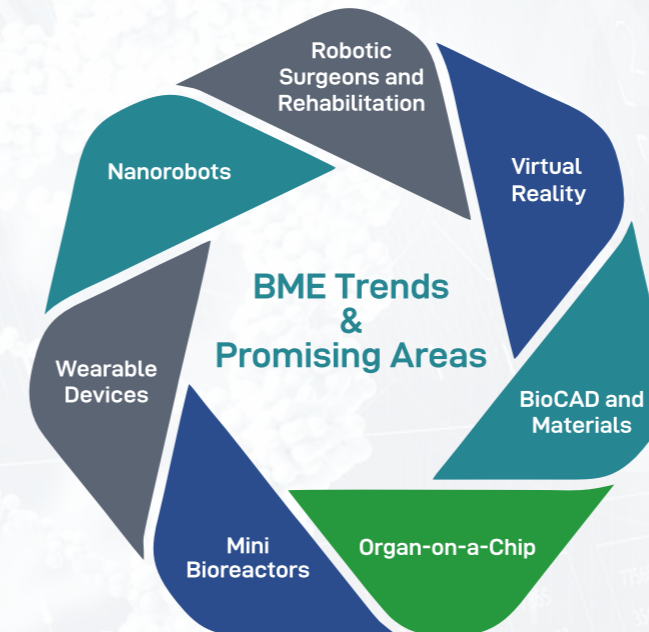


## Value Added Courses

- MATLAB Programming
- LabVIEW Programming
- Android App Development for BME
- Bio CAD for Biomedical Engineering

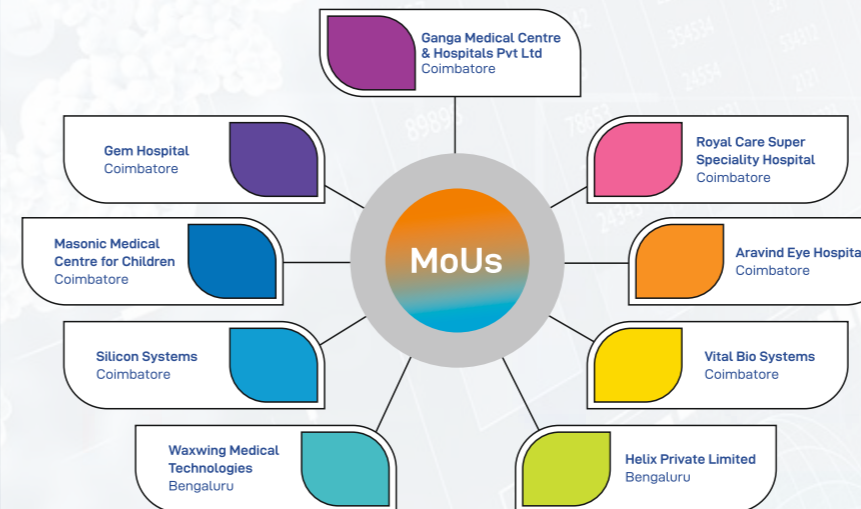
## BME Career Opportunities

- National Institute for Research in Tuberculosis  
Source : NIRT website
- Jawaharlal Institute of Postgraduate Medical Education & Research  
Source : JIPMER Recruitment Portal
- Managers/Biomedical Engineers @ various countries  
Source : Naukri.com
- National Brain Research Centre  
Source : mysarkarnaukri.com
- Government Hospitals across in India



## Academic Achievements

- Mr. V.M. Mohamed Afsal (Batch 2017-21) has secured 209<sup>th</sup> Place (All India Ranking) in GATE -2021 in Biomedical Stream.
- Received funds for seminar proposal from Council of Scientific & Industrial Research (CSIR)
- Students won prizes in Hackathan and Chhatra Vishwakarma Awards - 2021



## Centres & Cells @ KPRIET

CAC | CFAC | CIED | CIPR | CFRD | CFTIE | CEP | EOC | IIPC | IEC | KPR MC | OAR | OIR | CDC | WEC | CFLA



## Club House @ KPRIET

